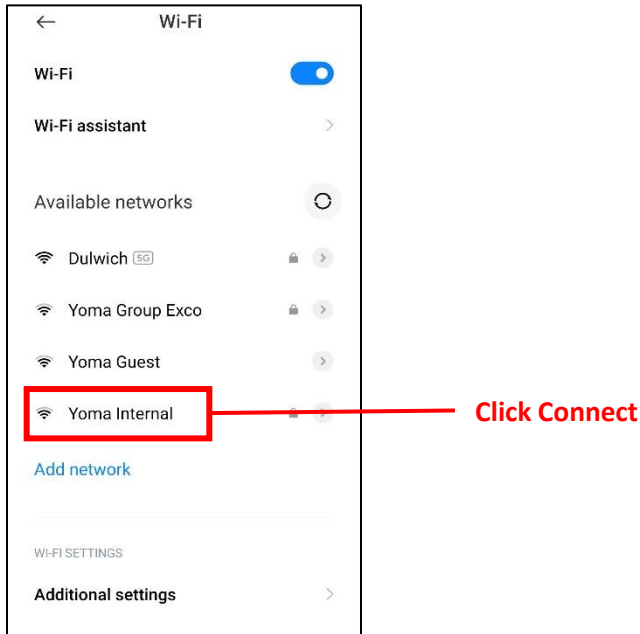


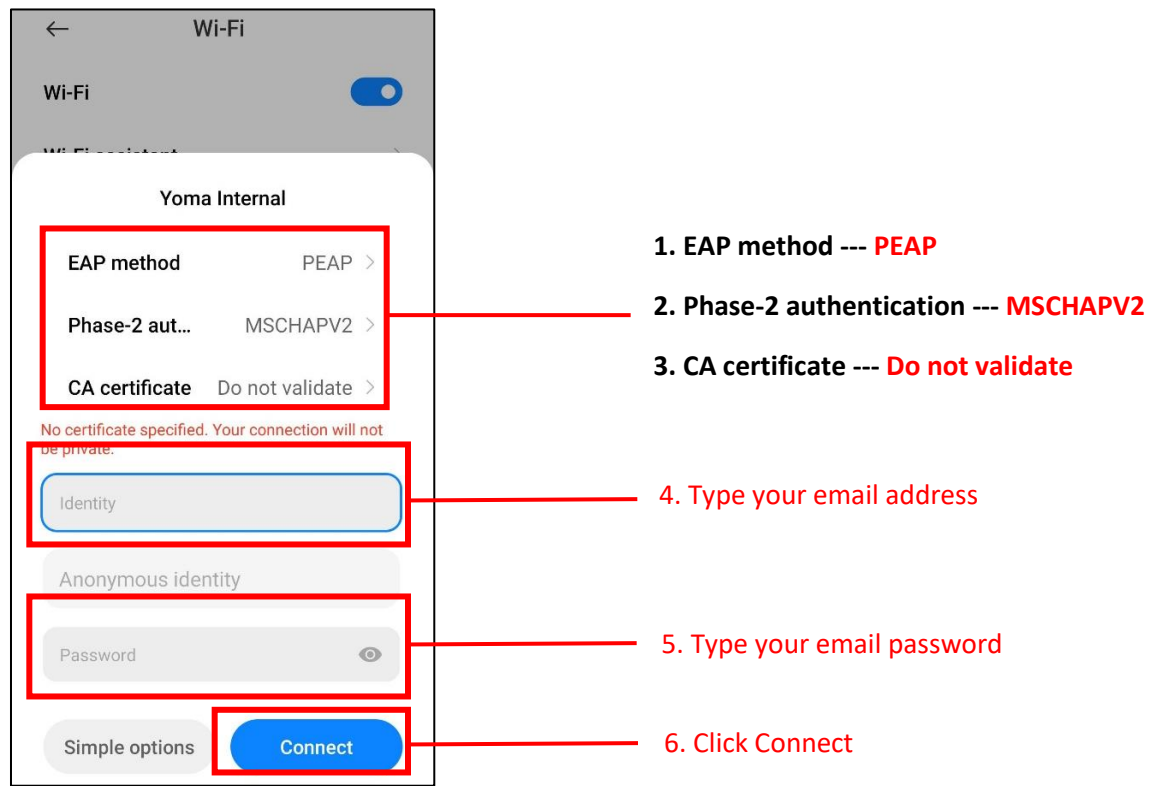
How to Connect “Yoma Internal” Wi-Fi (For Android)

Please connect step by step as below pictures.

1. Click on Wireless icon ---> **Yoma Internal** and click **Connect**.

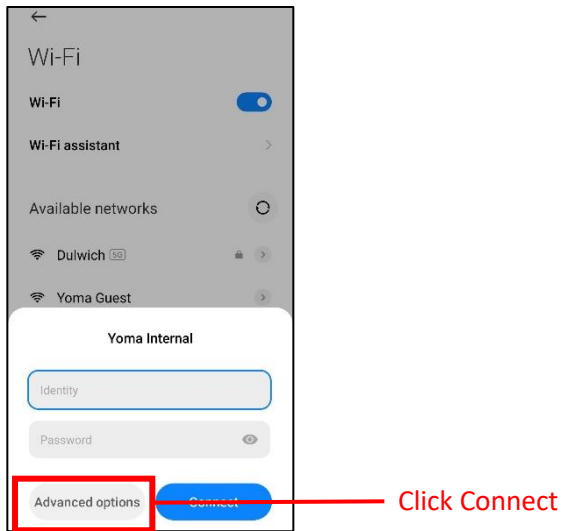


2. To connect “Yoma Internal” Wi-Fi you need to choose as below in your Android Phone.

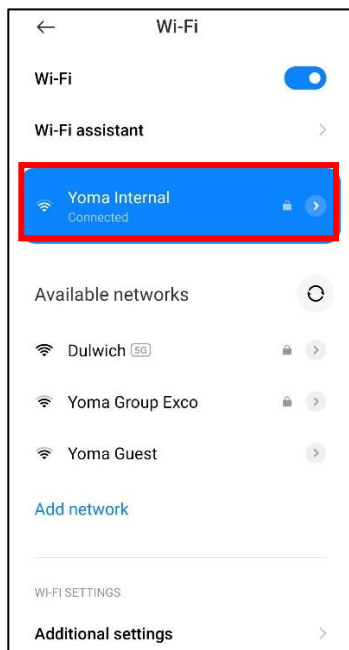


3.

4. Please go to “**Advanced Options**” If you are not found to choose above step.



5. After finished above step Yoma Internal Wi-Fi is connect and you can use Internet.



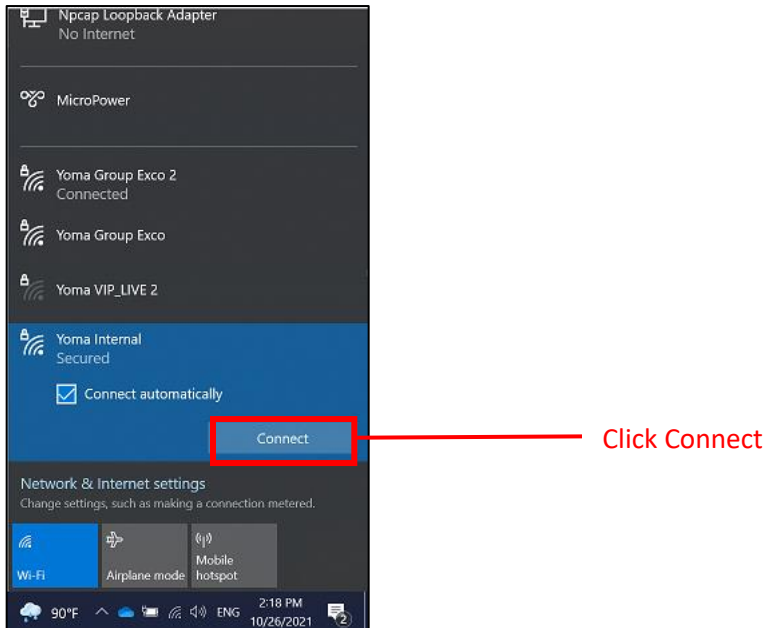
*****Important Note*****

When you change your email password “Yoma Internal” Wi-Fi need to do forgot and reconnect again as above steps.

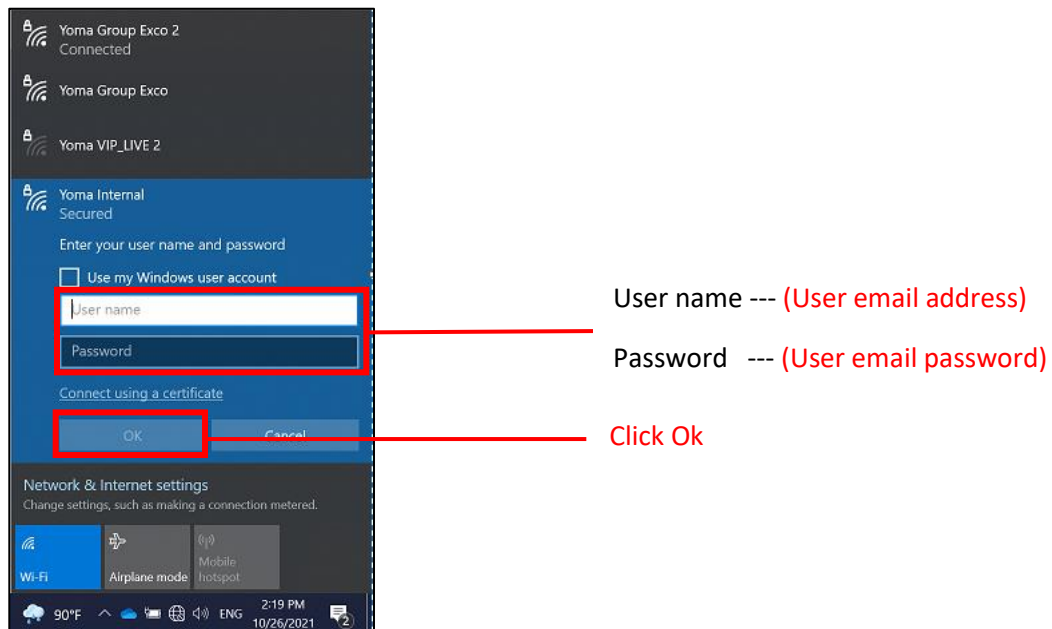
How to Connect “Yoma Internal” Wi-Fi (For Windows)

Please connect step by step as below pictures.

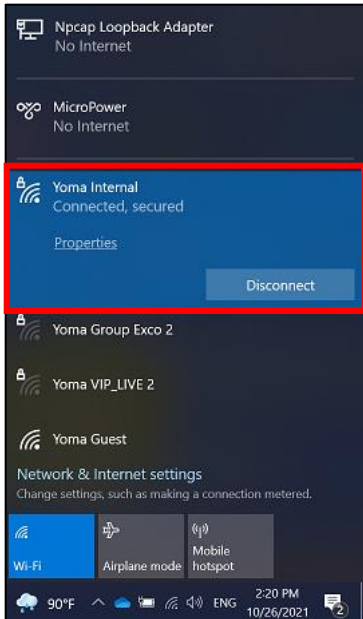
1. Click on Wireless icon ---> Choose **Yoma Internal** and click **Connect**.



2. Please use your email address and password to connect Yoma Internal Wi-Fi.



3. After finished above step Yoma Internal Wi-Fi is connect and you can use Internet.



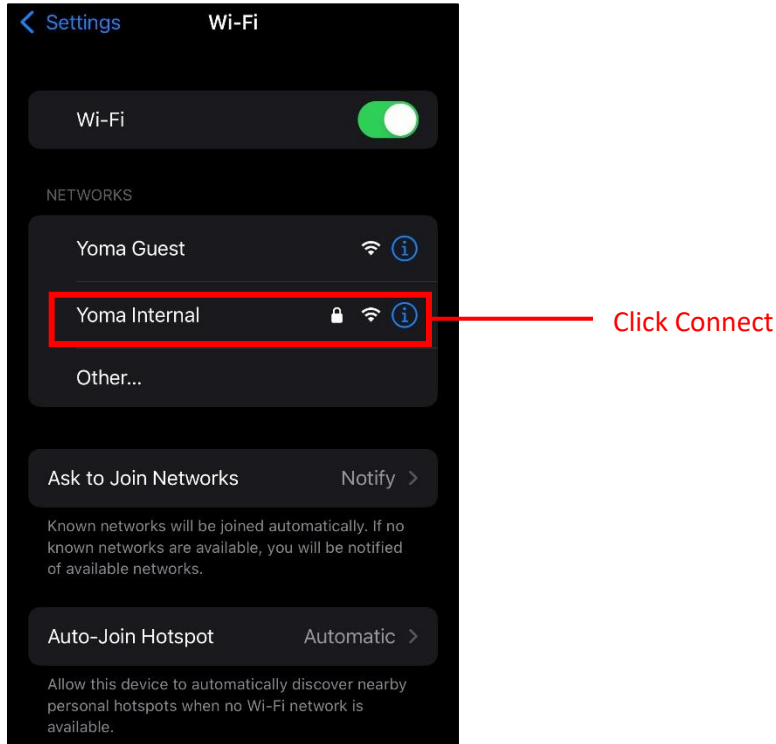
*****Important Note*****

When you change your email password "Yoma Internal" Wi-Fi need to do forgot and reconnect again as above steps.

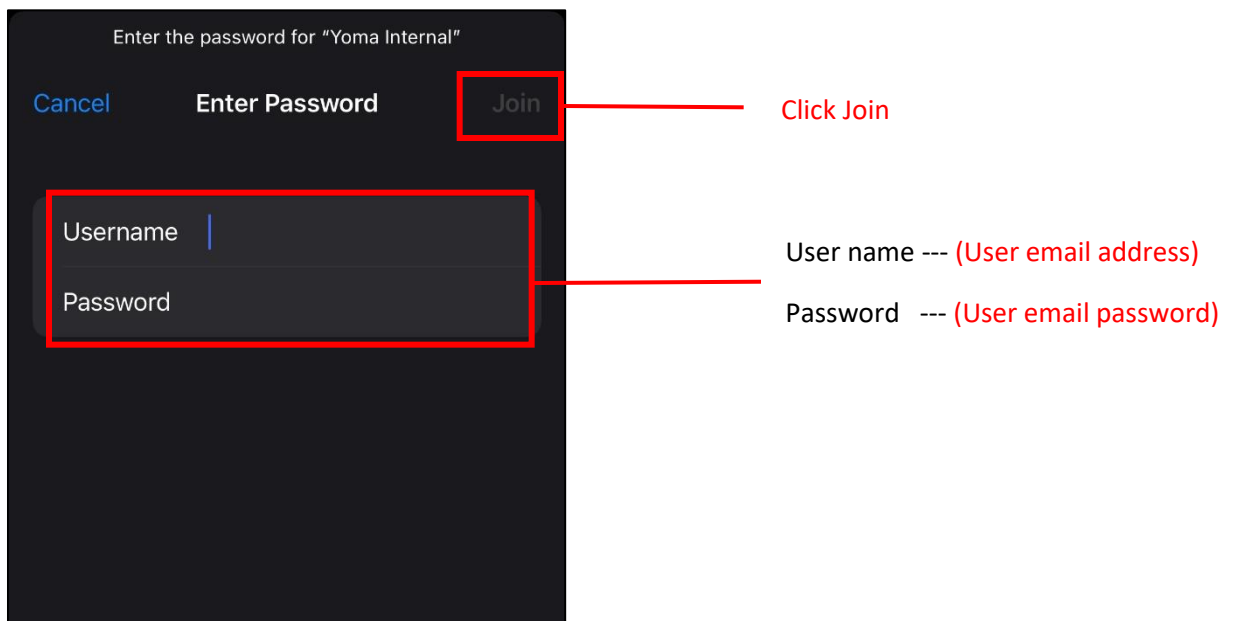
How to Connect “Yoma Internal” Wi-Fi (For iPhone)

Please connect step by step as below pictures.

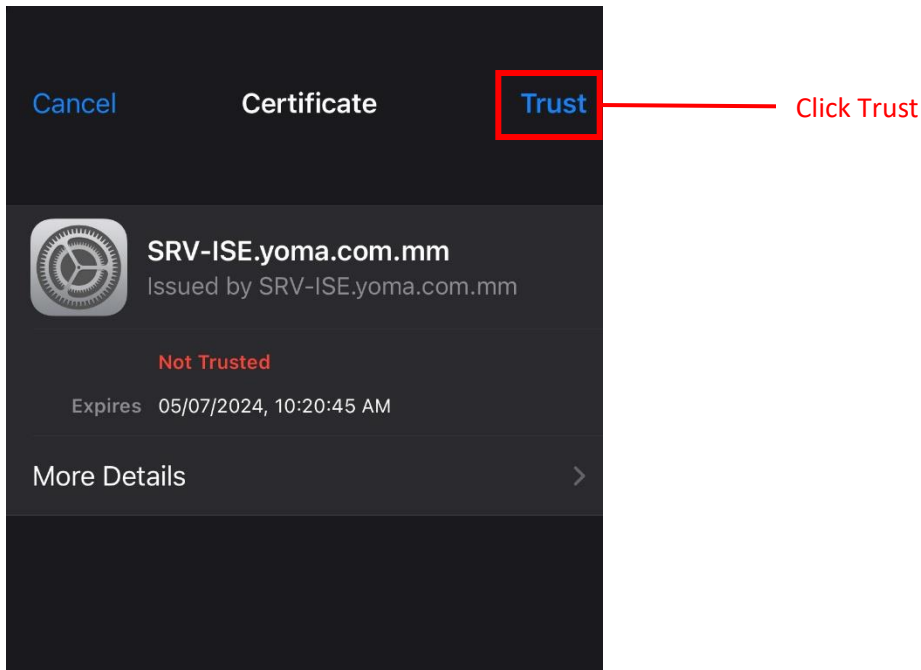
1. Click on Wireless icon ---> Choose **Yoma Internal** and click **Connect**.



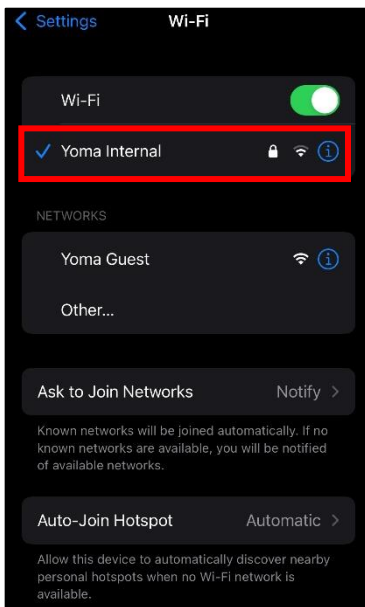
2. Please used your email address and password to connect Yoma Internal Wi-Fi.



3. Please click Trust for local Wi-Fi certificate.



4. After finished above step Yoma Internal Wi-Fi is connect and you can use Internet.



*****Important Note*****

When you change your email password “Yoma Internal” Wi-Fi need to do forgot and reconnect again as above steps.